

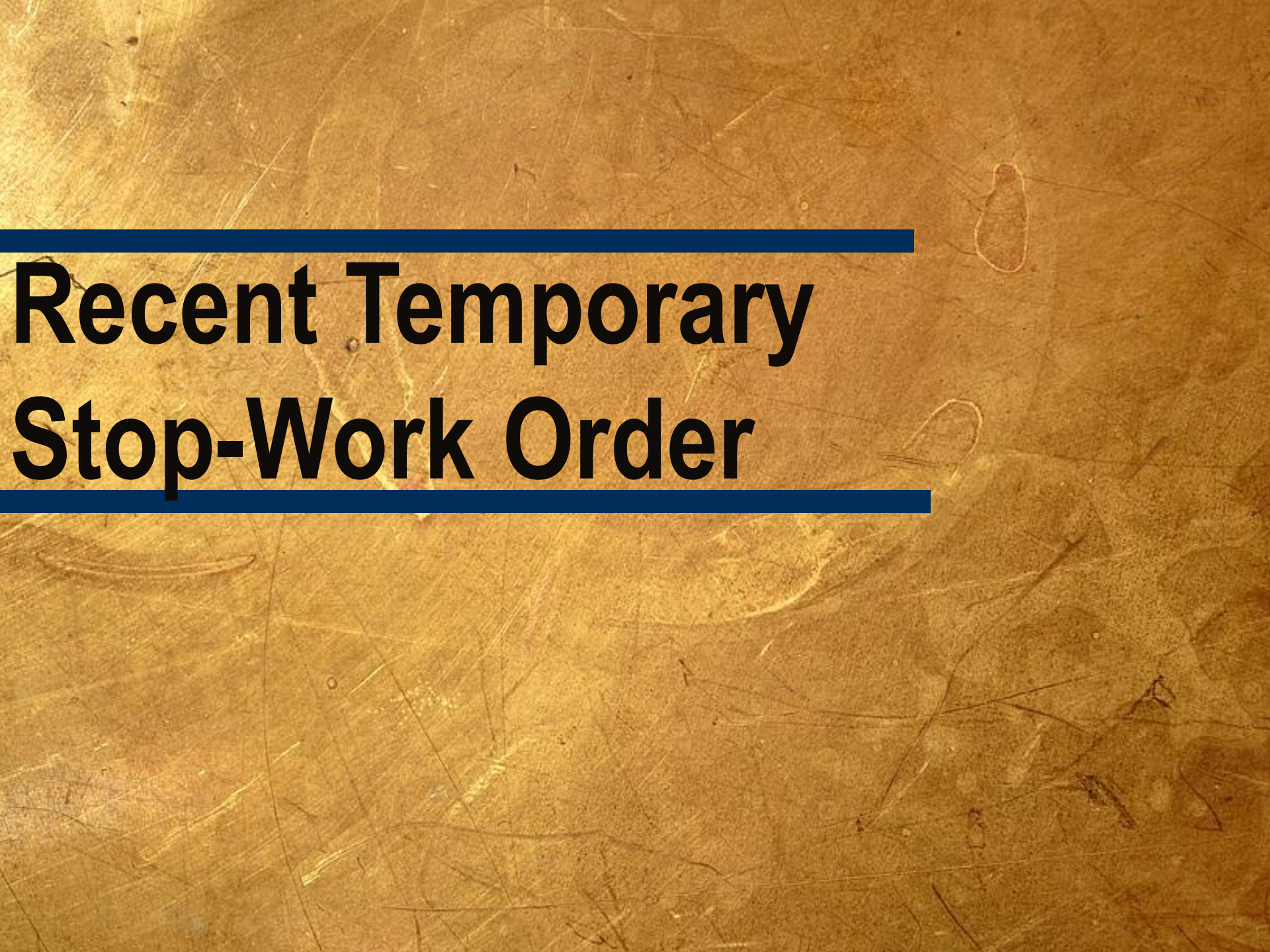


CNMC Goldmine Holdings Limited

2Q2016 Results Briefing

11 August 2016

(These presentation slides are available on the Company's corporate website www.cnmc.com.hk)



Recent Temporary Stop-Work Order

Sequence of Events

19 July 2016

CNMC receives stop-work notice from Kelantan State Lands and Mines Office (PTG); requests stock trading halt

21 July 2016

CNMC announces stop-work order on SGX after clarifications with PTG; seeks lifting of trading halt

24 July 2016

CNMC and JV partner, Kelantan State Economic Development Corp (KSEDC), meet PTG and other government agencies in Kelantan to discuss application status

25 July 2016

CNMC seeks trading halt to announce lifting of stop-work order; operations resume at Sokor

26 July 2016

Trading resumes on SGX

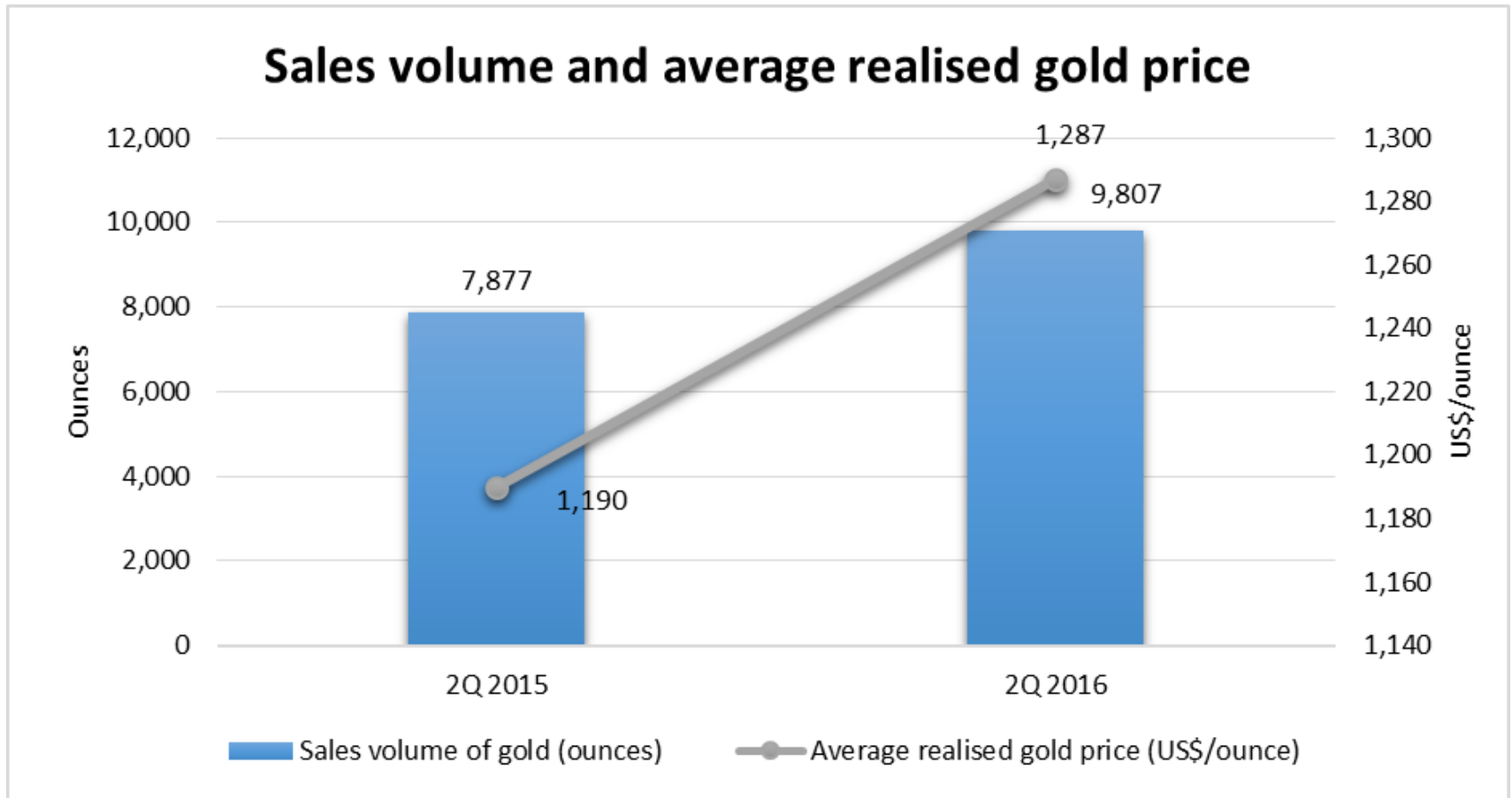
2Q2016

Financial Highlights

Financial Highlights

Income statement	2Q 2016	2Q 2015	Change	1H 2016	1H 2015	Change
Revenue (US\$' million)	12.62	9.38	↑ 34.5%	21.03	17.22	↑ 22.1%
Results from operating activities (US\$' million)	5.71	4.44	↑ 28.6%	11.38	7.05	↑ 61.4%
Net profit (US\$' million)	5.85	4.43	↑ 32.1%	11.46	6.97	↑ 64.4%
Net profit (excluding FX Impact) (US\$' million)	6.49	4.71	↑ 37.8%	10.14	7.92	↑ 28.0%
Net profit margin	46.4%	47.2%	↓ -0.8%	54.5%	40.5%	↑ 14.0%
Net profit margin (excluding FX Impact)	51.4%	50.2%	↑ 1.2%	48.2%	46.0%	↑ 2.2%
Earnings per share (US cents)	1.16	0.88	↑ 31.8%	2.27	1.37	↑ 65.7%
Earnings per share (SG cents)	1.61	1.19	↑ 35.3%	3.15	1.85	↑ 70.3%
Statement of financial position	As at 30/06/16	As at 31/12/15	Change			
Net assets value (US\$' million)	41.01	33.49	↑ 22.5%			
Net assets value per share (US cents)	10.07	8.22	↑ 22.5%			
Net assets value per share (SG cents)	13.59	11.62	↑ 17.0%			
Current ratio	7.73	5.54	↑ 39.5%			
Debt/equity ratio	0.003	0.004	↓ -25.0%			

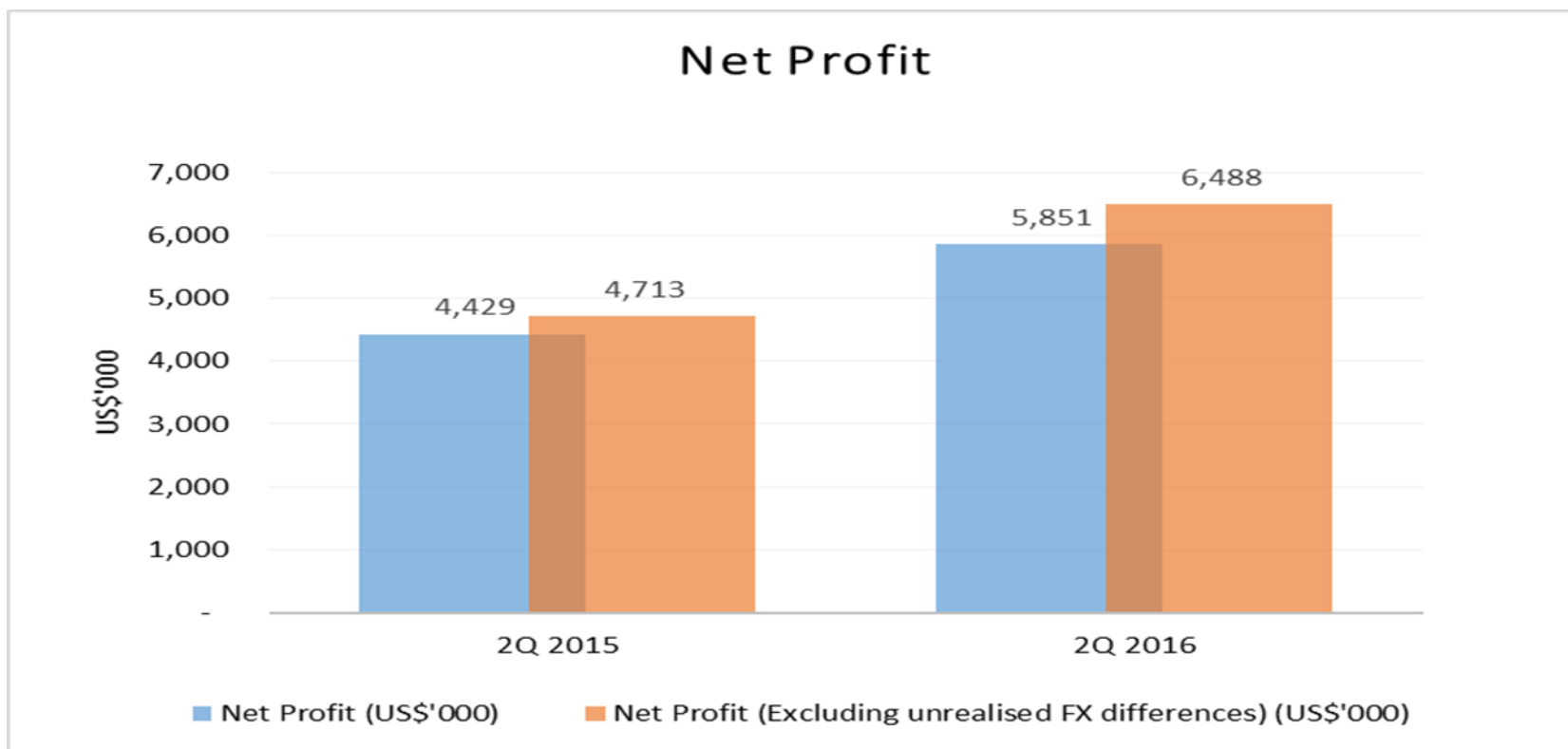
Revenue



Revenue rose 35%:

- ↑ Average realised gold price, from US\$1,190/ounce to US\$1,287/ounce
- ↑ Sales volume of fine gold, from 7,877 ounces to 9,807 ounces

Net Profit



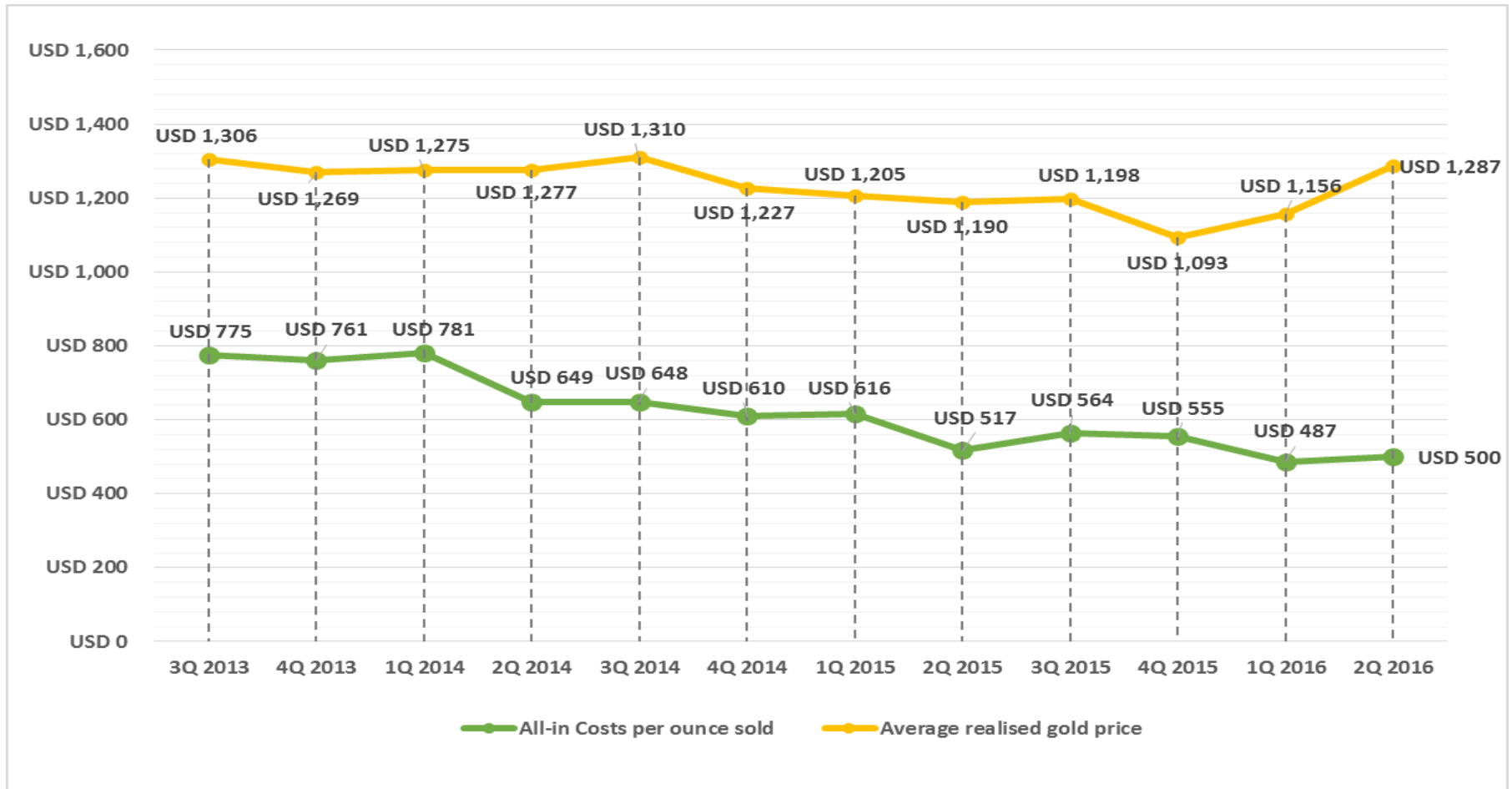
Net profit rose 32% to US\$5.85 million due mainly to higher revenue
Excluding the foreign-exchange impact, CNMC's net profit would have increased 38% to US\$6.49 million

Analysis Of All-In Costs And Margin

	2Q 2016	2Q 2015	Changes
	US\$ / gold ounce sold		%
Mining related costs	315	291	8%
Royalty and tribute expenses	94	88	7%
Adjusted operating costs	409	379	8%
General and administrative costs	53	55	-4%
Capital expenditure	16	28	-43%
All-in sustaining costs	478	462	3%
Capital exploration (non-sustaining)	6	6	0%
Capital expenditure (non-sustaining)	16	49	-67%
All-in costs (A)	500	517	-3%
Average realized gold price (B)	1,287	1,190	8%
All-in Margin (C= B - A)	787	673	17%
All-in Margin (%) (C / B)	61%	57%	4%

All-in sustaining costs include adjusted operating costs and sustaining capital expenditure, corporate general and administrative expenses, exploration expense, reflecting the full cost of gold production from current operations.

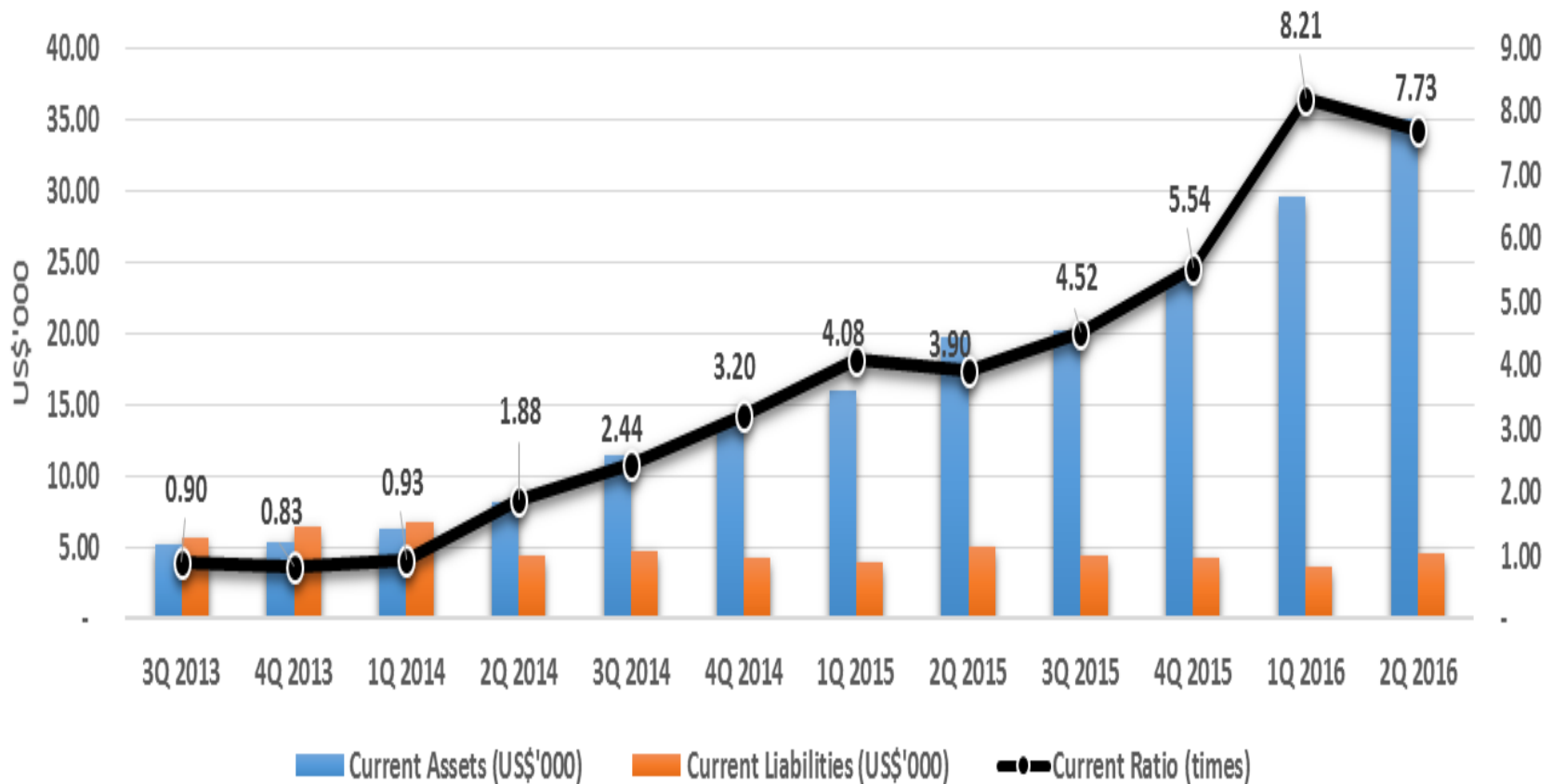
Summary Of All-In Costs And Margin



All-in costs of production declined to US\$500/ounce in 2Q 2016 from US\$517/ounce in 2Q2015, reflecting the success of CNMC's ongoing efforts to improve operational efficiency.

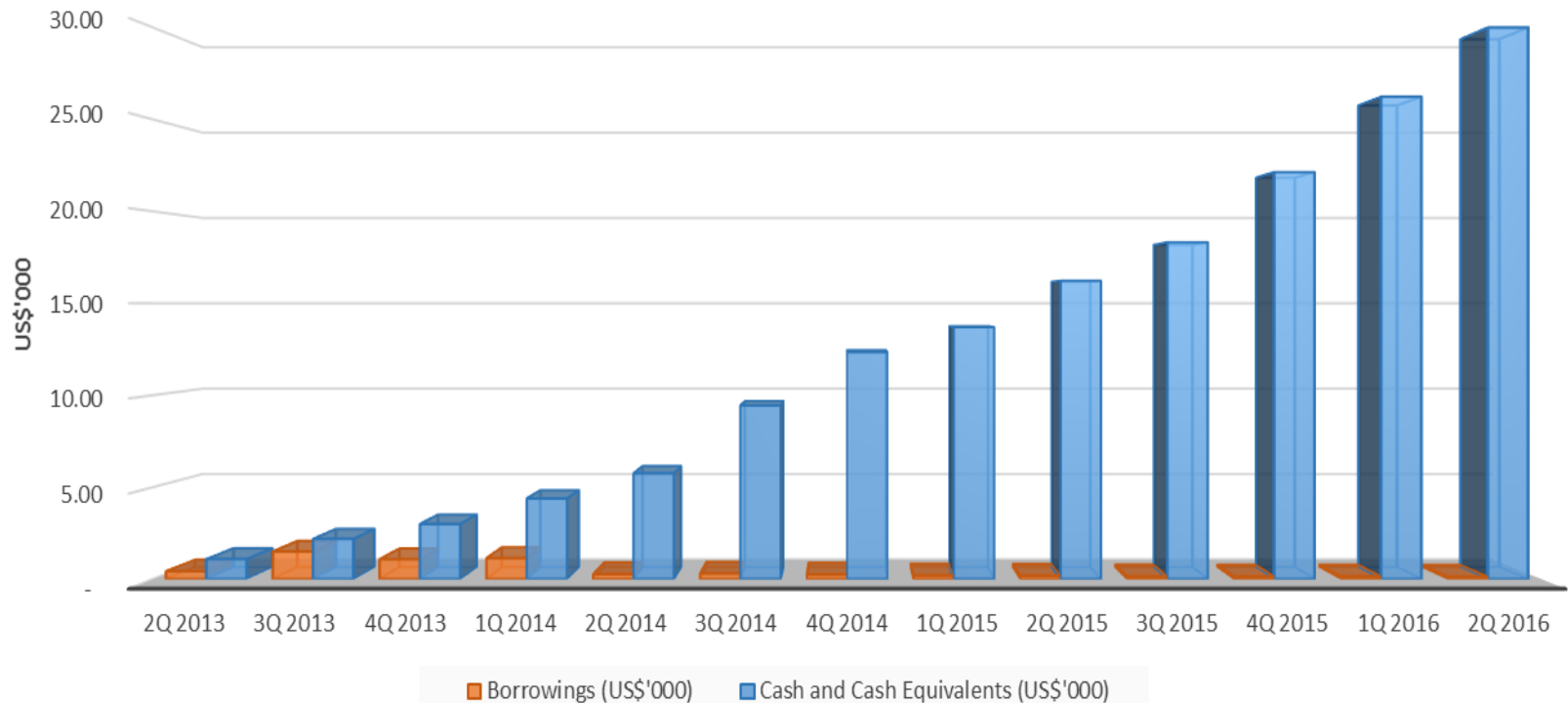
Balance Sheet Highlights

Current Assets versus Current Liabilities, Current Ratio



Cash Position

Cash and Cash Equivalents versus Borrowings



- In 2Q2016, the company generated net cash of US\$9.00 million from operations, up from US\$4.61 million in 2Q2015.
- It had cash and cash equivalents of US\$32.48 million at the end of the quarter, twice as much as the US\$16.22 million as at end-2Q2015.

2016 Milestones

2016 Milestones

Date	Milestone
4 July	Produced 9,807.37 ounces of fine gold in 2Q2016, the most in any quarter since gold production started in 2010
28 June	Letter of intent to acquire 51% stake in Pulai Mining Sdn Bhd, which is authorised to mine for gold, iron ore and feldspar in Kelantan
6 June	MoU with University of Malaya for research collaboration
13 April	Newly upgraded vat leach facility achieves first gold pour, producing 1,363.29 ounces of gold doré bars
31 March	Gold resources amounted to 13.83 million tonnes at 1.4g/t gold as at 31 December 2015. This translates into 618,000 ounces of contained gold, up 22% compared to 31 December 2014
7 January	Produced record 31,205.85 ounces of fine gold in FY2015



Outlook & Investment Merits

Outlook

- **Continue Production Expansion:**
 - Increase leaching capacity and enhance gold recovery process with the aim of increasing gold production
- **Minimise Cost:**
 - Further streamline production process to reduce wastage of raw material
 - Leverage economies of scale from increased production capacity to lower material costs from key suppliers
- **Accelerate Exploration:**
 - Increase gold resources and reserves (as well as silver, lead and zinc resources and reserves) at Sokor
- **Expand Portfolio:**
 - Explore opportunities to acquire and develop other mines in Malaysia, other parts of Southeast Asia and Australasia

Competitive Strengths

Profitable gold producer

Low all-in costs of production

Strong operating cash flow

Corporate transparency

Exploring portfolio expansion

Stock Data & Dividend

Stock Data & Dividend

(SGX: 5TP) (Reuters: CNMC.SI) (Bloomberg: CNMC:SP)	05 August 2016
Price per share	S\$0.520
Market capitalisation	S\$ 211.79 Million
Share issued	407.29 Million
P/E ratio (Note)	10.44
Dividend Yield (YTD)	1.86%

Note: Market price per share @ 5 August 2016 / Trailing earning per share (S\$) as of 30 June 2016.

For 1H2016, CNMC will pay an interim tax-exempt dividend of 0.20 Singapore cent per share, up from 0.18 Singapore cent per share in 1H2015.

Dividend Yield is based on FY2015 2nd interim tax-exempt dividend of 0.18 Singapore cent per share, FY2015 final dividend of 0.18 Singapore cent per share and special dividend of 0.405 Singapore cent per share and FY2016 1st interim tax-exempt dividend of 0.20 Singapore cent per share for FY2016.

Pulai Mining - Strategic Acquisition

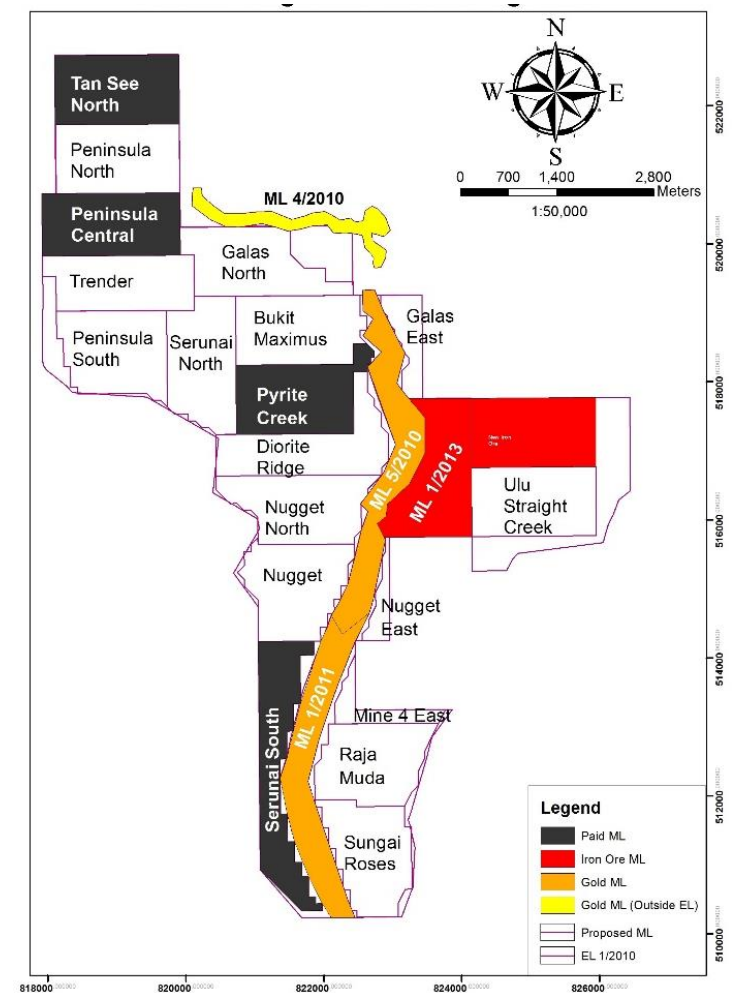
Strategic Acquisition

- On 28 June 2016, CNMC signed a non-binding letter of intent with Pulai Mining Sdn Bhd (“Pulai”) to acquire a 51% stake
- Existing shareholders of Pulai are:
 - Sumberjaya Ventures Sdn Bhd,
 - Centurion Resources Pte Ltd,
 - Perbadanan Kemajuan Iktisad Negeri Kelantan,
 - CM Strategic Holdings Pte Ltd; and
 - Kelstone Sdn Bhd
- Pulai will issue new shares to CNMC for a total consideration of RM13.8 million (approx. US\$3.4 million), which will be funded through internal resources
- Acquisition is expected to yield substantial synergies



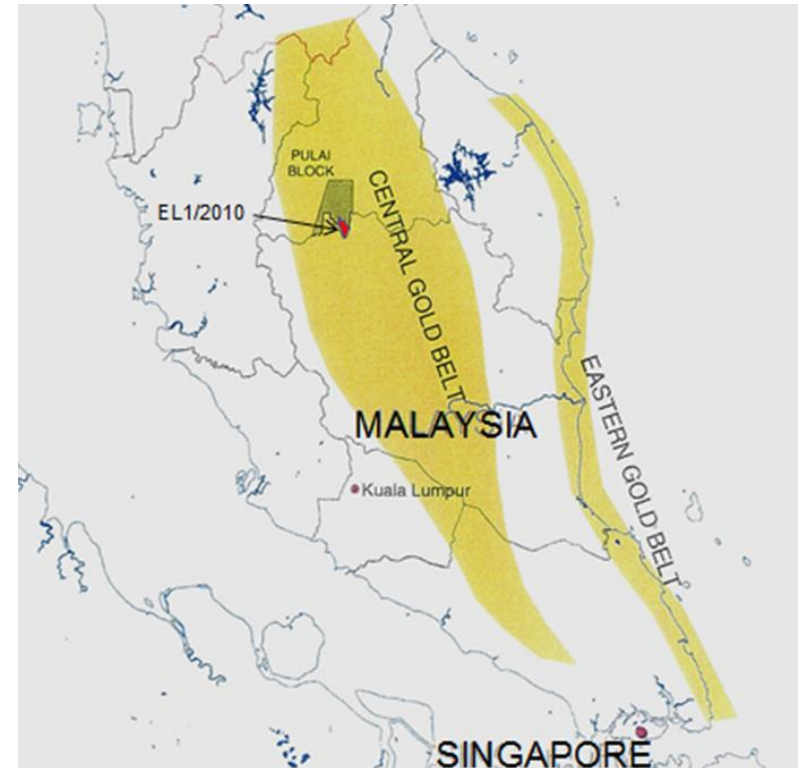
About Pulai

- Pulai Mining is a brownfield project with 11 licenses spanning about 3,841.3ha (38.4km²) to explore and mine for gold, iron ore and feldspar
- From March 2011 to May 2013, it produced and sold over 260kg of gold with a value close to RM38 million from alluvial mining
- Project has never systematically explored feldspar deposits but managed to generate over RM500,000 in revenue from feldspar mining in FY2015



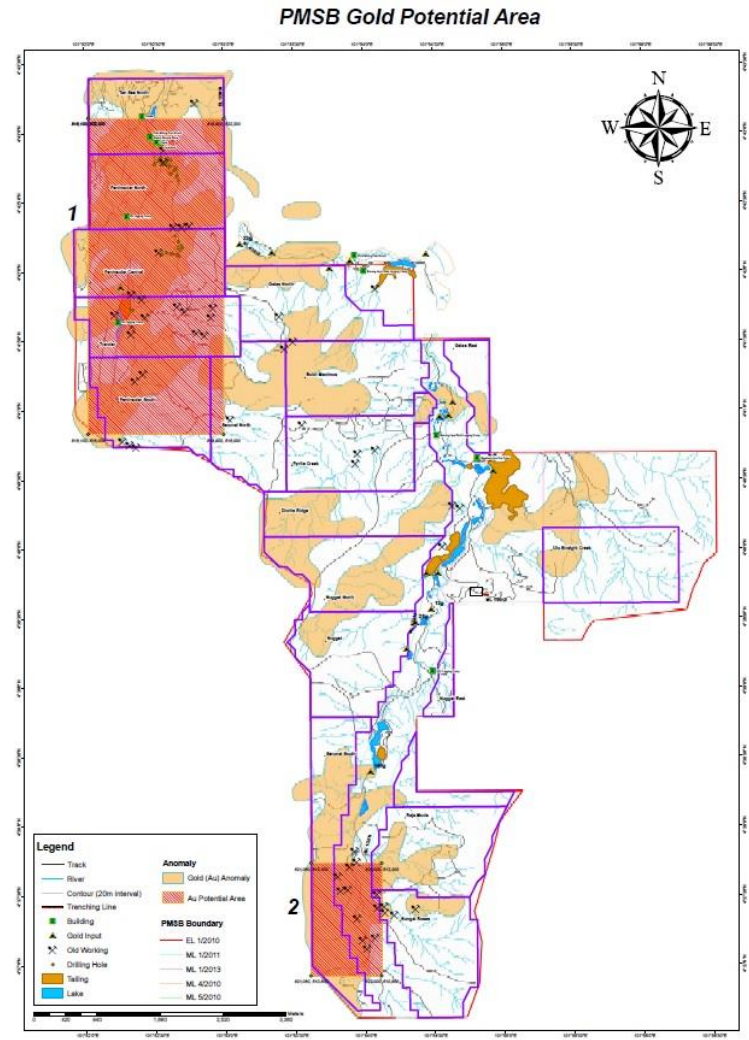
Location

- Pulai's concession areas are located approximately 17km Southwest of GuaMusang town, Kelantan, Malaysia
- Approximately 105km from our Sokor Gold Field Project
- Central Gold Belt of Malaysia lies on the eastern side of the Raub-Bentong suture, a regional scale structure that extends northwards through Thailand and Laos into China



Previous Exploration Activities

- Whole EL radar (LIDAR) topography
- Soil geochemical survey of 43.41km²
- Induced polarization surface survey area of 7.5km²
- Simple geological survey and sampling
- 52 drill holes - total length of 5,715.6m
- 12 channeling sampling



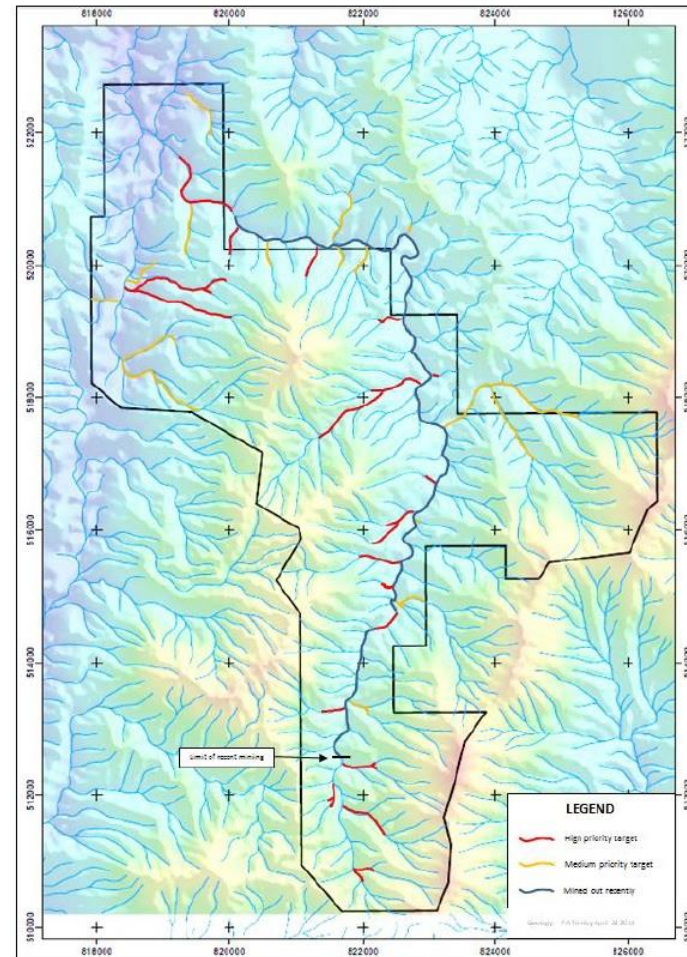
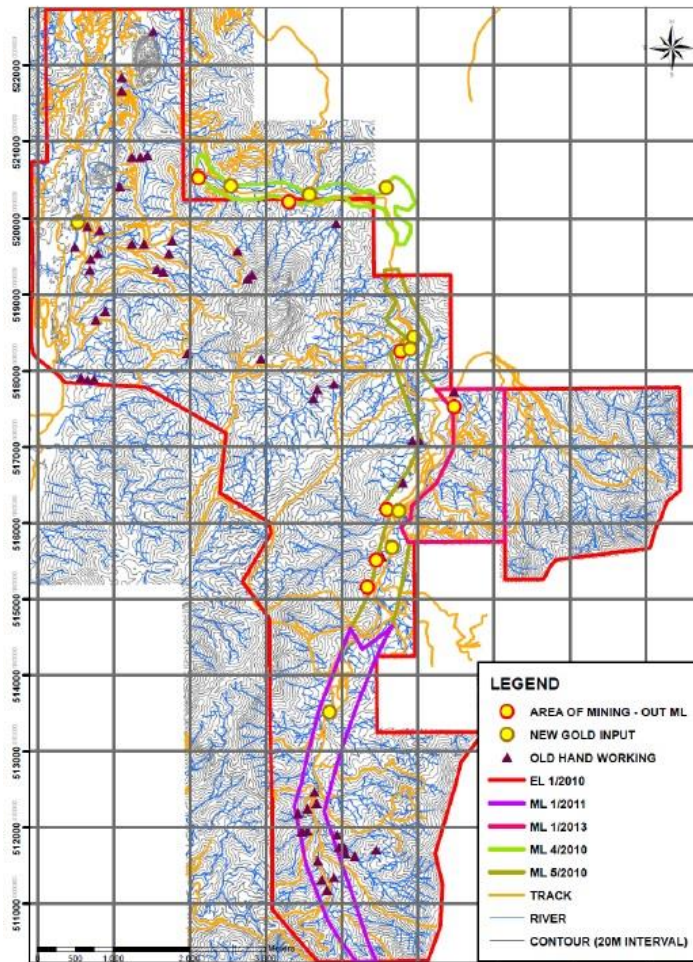
Previous Exploration Activities

- From October 2014 to April 2015, exploration team from China Railway Resources Exploration Ltd carried out geological mapping, geochemical anomaly inspection, drilling core verification, trenching and comprehensive study of regional mineralization characteristics
- Comparative studies have shown that Pulai has similar mineralization features as Sokor Gold Mine
- Similar geological background – both on the east side of Bentong-Raub fault within 15-30km range within the same mineralization belt
- Similar tectonic structure – fault structures have developed well and control the distribution of alteration and mineralization
- Similar geochemistry and mineralization features



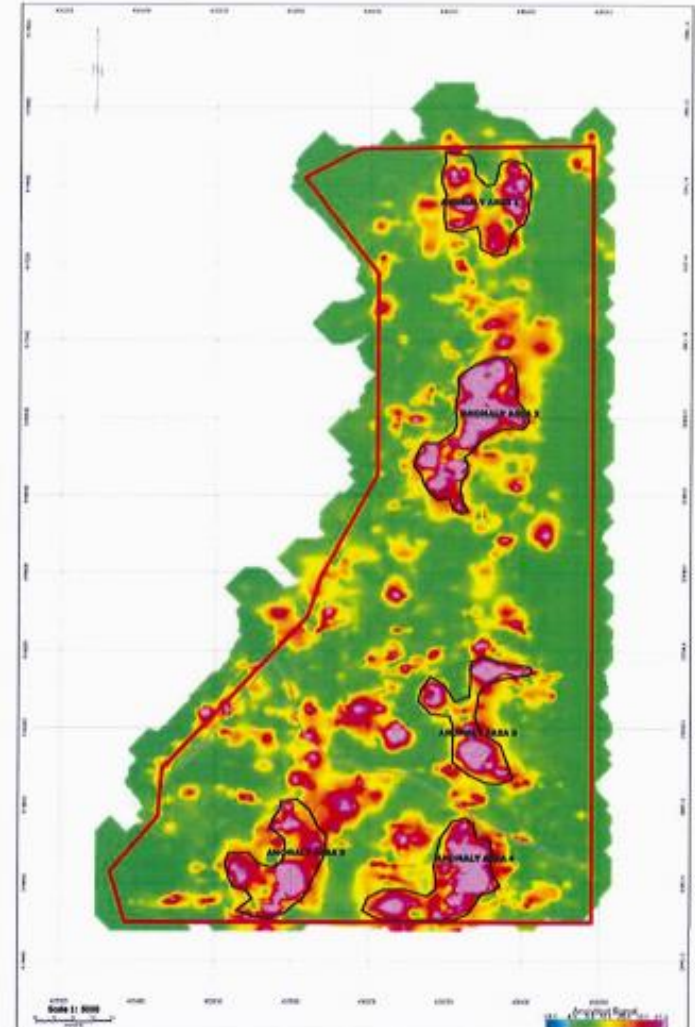
Potential Alluvial Production

- Review of previous gold production data collected by previous consultant concluded there was evidence to support the interpretation of possible new gold inputs



Potential Iron Ore Mineralization

- Geomagnetic studies delineated 5 anomaly zones
- Total of 27 RC drillholes were completed in all 5 anomaly zones
- About 10,000 tonnes of ore were extracted with grade ranging from 50% to 55% Fe



About CNMC

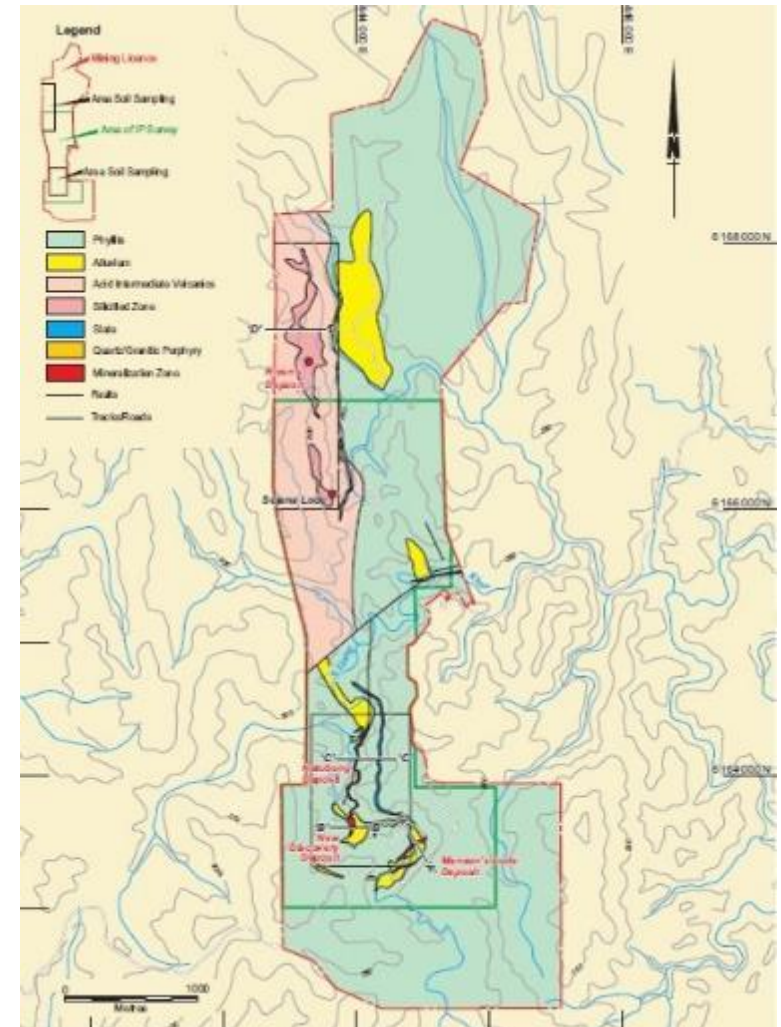
About CNMC

- Involved in exploration and mining of gold, and processing of mined ore into gold dores
- Commenced operations in 2007; first Catalist-listed gold producer on SGX-ST (listed in October 2011)
- Current flagship project – Sokor Gold Field in Kelantan, Malaysia
- CNMC founded by Prof Lin Xiang Xiong, Chief Advisor for China International Trade to Kelantan State Government



Sokor Gold Field Project

- Spanning an area of 10km², Sokor had 618,000 ounces of JORC-compliant gold resources (including ore reserves) as at 31 December 2015
- Achieved first gold pour on 21 July 2010
- Produced more than two metric tonnes of fine gold bullion since production commenced
- 4 identified areas: Manson's Lode, New Discovery, Sg. Ketubong, Rixen
- Mining licences obtained with full support from Kelantan State Government



Production Facilities

- Three leaching yards with estimated leaching capacity of 1 million tonnes of ore per annum
- Brand-new gold de-absorption plant comprising gold de-absorption, active carbon re-generation and smelting systems to support leaching capacity of 1 million tonnes of ore per annum

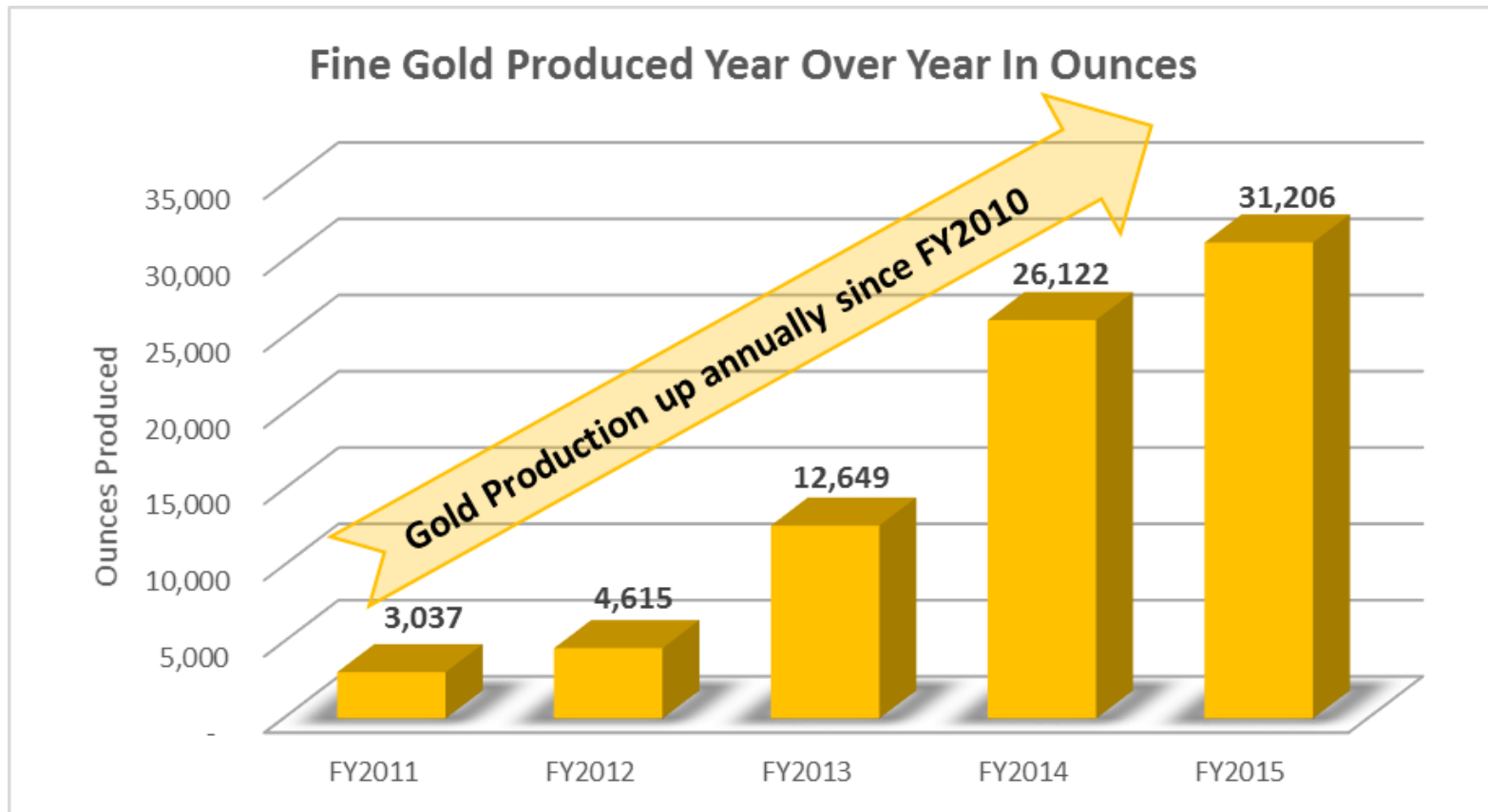


Production Facilities

- Brand-new ore agglomeration facility in construction
- Upgraded vat leaching facility with leaching capacity of 200,000 tonnes of ore per annum



Fine-Gold Production



- Commenced gold production in July 2010 and has since successfully produced more than 85,000 ounces (2.64 metric tonnes) of fine gold
- Over the comparative periods, fine gold production increased 19.46% to 31,205.85 ounces in FY2015 from 26,122.08 ounces in FY2014

JORC-Compliant Gold Resources

Category	Mineral type	Gross attributable to licence			Gross attributable to CNMC			
		Tonnes (millions)	Grade (Au g/t, Ag g/t, Pb%, Zn%)	Contained metal (Au koz, Ag koz, Pb t, Zn t)	Tonnes (millions)	Grade (Au g/t, Ag g/t, Pb%, Zn%)	Contained metal (Au koz, Ag koz, Pb t, Zn t)	Change from previous update (%)
Measured	Gold	0.56	3.1	56	0.46	3.1	45	-2%
Indicated	Gold	7.14	1.3	297	5.78	1.3	241	+4%
Inferred	Gold	6.13	1.4	265	4.95	1.4	215	+63%
Total	Gold	13.83	1.4	618	11.18	1.4	501	+22%
Measured	Silver	0.33	63	674	0.27	63	546	+2%
Indicated	Silver	0.17	73	398	0.14	73	322	+10%
Inferred	Silver	0.71	28	645	0.57	28	522	+36%
Total	Silver	1.21	44	1,717	0.98	44	1,391	+15%
Measured	Lead	0.33	1.7	5,632	0.27	1.7	4,562	+1%
Indicated	Lead	0.17	1.7	2,925	0.14	1.7	2,370	+11%
Inferred	Lead	0.71	1.7	12,245	0.57	1.7	9,918	+188%
Total	Lead	1.21	1.7	20,802	0.98	1.7	16,850	+67%
Measured	Zinc	0.33	1.7	5,535	0.27	1.7	4,483	+1%
Indicated	Zinc	0.17	2.0	3,299	0.14	2.0	2,672	+8%
Inferred	Zinc	0.71	1.5	10,781	0.57	1.5	8,733	+142%
Total	Zinc	1.21	1.6	19,615	0.98	1.6	15,888	+51%

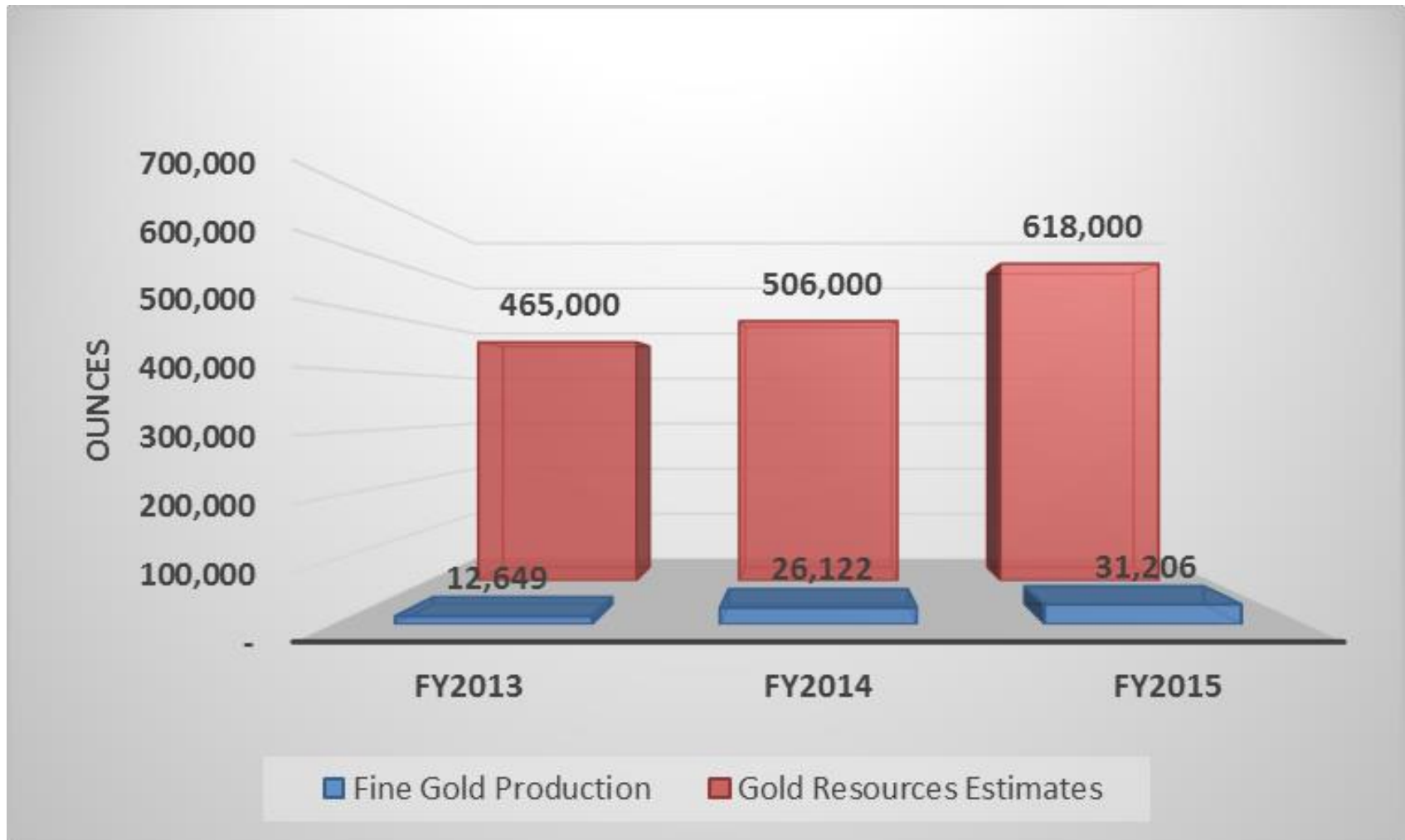
Note: Inconsistencies in totals are due to rounding

Table extracted from Sokor Project – updated Mineral Resources and Ore Reserves Estimate as at 31 December 2015.

As at 31 December 2015, Total Measured, Indicated and Inferred gold Mineral Resources for the Sokor Gold Project (above a 0.3 g/t gold cut-off grade at Rixen, a 0.4 g/t gold cut-off grade at New Discovery and a 0.5 g/t gold cut-off grade at Manson's Lode and Ketubong) were 13.83 million tonnes at 1.39g/t gold with contained gold of 618,000 ounces (2014: 10.81 million tonne at 1.5 g/t gold with contained gold of 506,000 ounces).

Resources and Production

Gold Resources Versus Fine Gold Production



Disclaimer

The materials used herein and this presentation (collectively, the “Presentation”) have been prepared by CNMC Goldmine Holdings Limited (“CNMC”) solely for use at the presentation to be made to qualified investors and investment professionals. By viewing the Presentation, or by reading the materials used at the Presentation, you agree to be bound by the following limitations:

- The Presentation is strictly confidential and may not be copied, published, distributed or transmitted or disclosed by recipients to third parties.
- The Presentation does not constitute or form part of any offer or invitation to sell or issue, or any solicitation of any offer to purchase or subscribe for, any securities or an inducement to enter into any investment activity, nor shall any part or all of the Presentation form the basis of, or be relied on in connection with, any contract or investment decision in relation to any securities.
- The Presentation contains forward-looking statements based on the currently held beliefs and assumptions of the management of the Company, which are expressed in good faith and, in our opinion, reasonable. Forward-looking statements involve known and unknown risks, uncertainties and other factors, which may cause the actual results, financial condition, performance, or achievements of the Company or industry results, to differ materially from the results, financial condition, performance or achievements expressed or implied by such forward-looking statements. Given these risks, uncertainties and other factors, viewers of the Presentation are cautioned not to place undue reliance on these forward-looking statements.
- The Presentation is only directed at qualified investors and investment professionals and other persons should not rely on or act upon the Presentation or any of its contents.
- The Presentation does not constitute a recommendation regarding the securities of the Company. By attending this presentation you acknowledge that you will be solely responsible for your own assessment of the market and the market position of the Company and that you will conduct your own analysis and be solely responsible for forming your own view of the potential future performance of the business of the Company.
- The Presentation reflects the affairs of the Company as at the date it is presented to the investors. Any further discussions of the Company or any of their respective affiliates with any of the recipients shall not, under any circumstances, create any implication that there has been no change in the affairs of the Company since such date.

Thank You

Media and Investor Contact Information:

WeR1 Consultants Pte Ltd
3 Phillip Street, #12-01
Royal Group Building, Singapore 048693
Tel: (65) 67374844 | Fax: (65) 67374944
Frankie Ho, frankieho@wer1.net
Grace Yew, graceyew@wer1.net