



**CNMC GOLDMINE
HOLDINGS LIMITED**



2Q2015 Results Briefing
12 August 2015

Disclaimer

The materials used herein and this presentation (collectively, the “Presentation”) have been prepared by CNMC Goldmine Holdings Limited (“CNMC”) solely for use at the presentation to be made to qualified investors and investment professionals. By viewing the Presentation, or by reading the materials used at the Presentation, you agree to be bound by the following limitations:

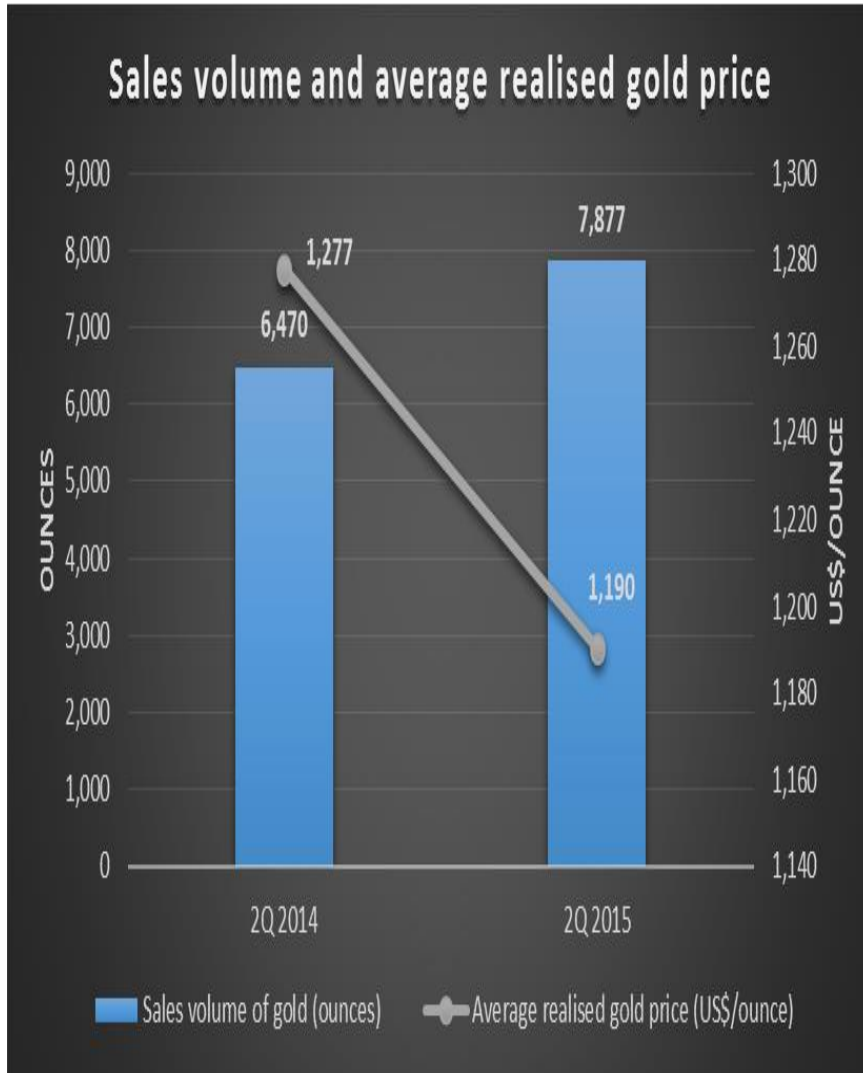
- The Presentation is strictly confidential and may not be copied, published, distributed or transmitted or disclosed by recipients to third parties.
- The Presentation does not constitute or form part of any offer or invitation to sell or issue, or any solicitation of any offer to purchase or subscribe for, any securities or an inducement to enter into any investment activity, nor shall any part or all of the Presentation form the basis of, or be relied on in connection with, any contract or investment decision in relation to any securities.
- The Presentation contains forward-looking statements based on the currently held beliefs and assumptions of the management of the Company, which are expressed in good faith and, in our opinion, reasonable. Forward-looking statements involve known and unknown risks, uncertainties and other factors, which may cause the actual results, financial condition, performance, or achievements of the Company or industry results, to differ materially from the results, financial condition, performance or achievements expressed or implied by such forward-looking statements. Given these risks, uncertainties and other factors, viewers of the Presentation are cautioned not to place undue reliance on these forward-looking statements.
- The Presentation is only directed at qualified investors and investment professionals and other persons should not rely on or act upon the Presentation or any of its contents.
- The Presentation does not constitute a recommendation regarding the securities of the Company. By attending this presentation you acknowledge that you will be solely responsible for your own assessment of the market and the market position of the Company and that you will conduct your own analysis and be solely responsible for forming your own view of the potential future performance of the business of the Company.
- The Presentation reflects the affairs of the Company as at the date it is presented to the investors. Any further discussions of the Company or any of their respective affiliates with any of the recipients shall not, under any circumstances, create any implication that there has been no change in the affairs of the Company since such date.

2Q2015 FINANCIAL HIGHLIGHTS

Financial Highlights

US\$ (million)	2Q2015	2Q2014	Change (%)	1H2015	1H2014	Change (%)
Revenue	9.38	8.27	+13.4	17.22	13.38	+28.7
Results from operating activities	4.44	3.88	+14.4	7.05	6.06	+16.3
Earnings before interest, taxation, depreciation, amortization ("EBITDA")	5.41	4.62	+17.1	8.90	7.31	+21.8
Net profit	4.43	5.50	-19.5	6.97	7.05	-1.1
Net profit excluding prior period's tax reversal	4.43	3.79	+16.9	6.97	5.83	+19.6
Net profit attributable to owners of the Company	3.59	4.44	-19.1	5.57	5.70	-2.3
Net profit attributable to owners of the Company, excluding prior period's tax reversal	3.59	3.06	+17.3	5.57	4.72	+18.0

Revenue



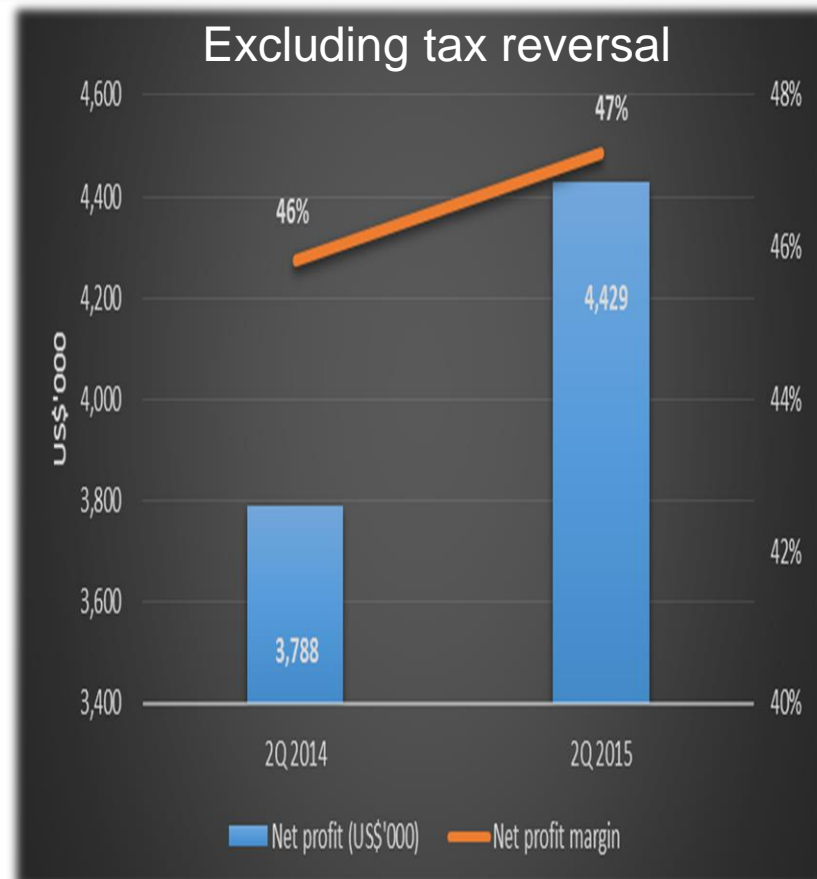
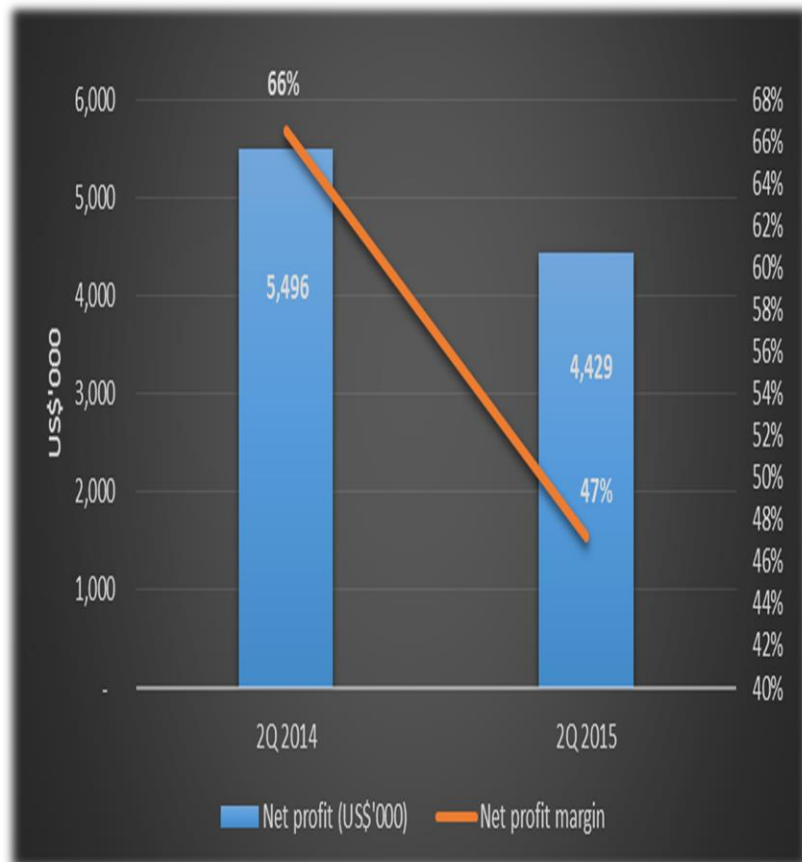
Revenue ↑13.4% mainly due to:

- **↑** Sales volume of fine gold, from 6,470 ounces to 7,877 ounces

But partly offset by:

- **↓** Average realised gold price, from US\$1,277/ounce to US\$1,190/ounce

Net Profit



Net profit ↓ by 19.5% mainly due to:

A one-off tax reversal of US\$1.71 million tax credit due to over-provision made before May last year when Malaysian authorities granted the mine 100% income-tax exemption on its statutory income on gold production for five years with effect from 1 July 2013.

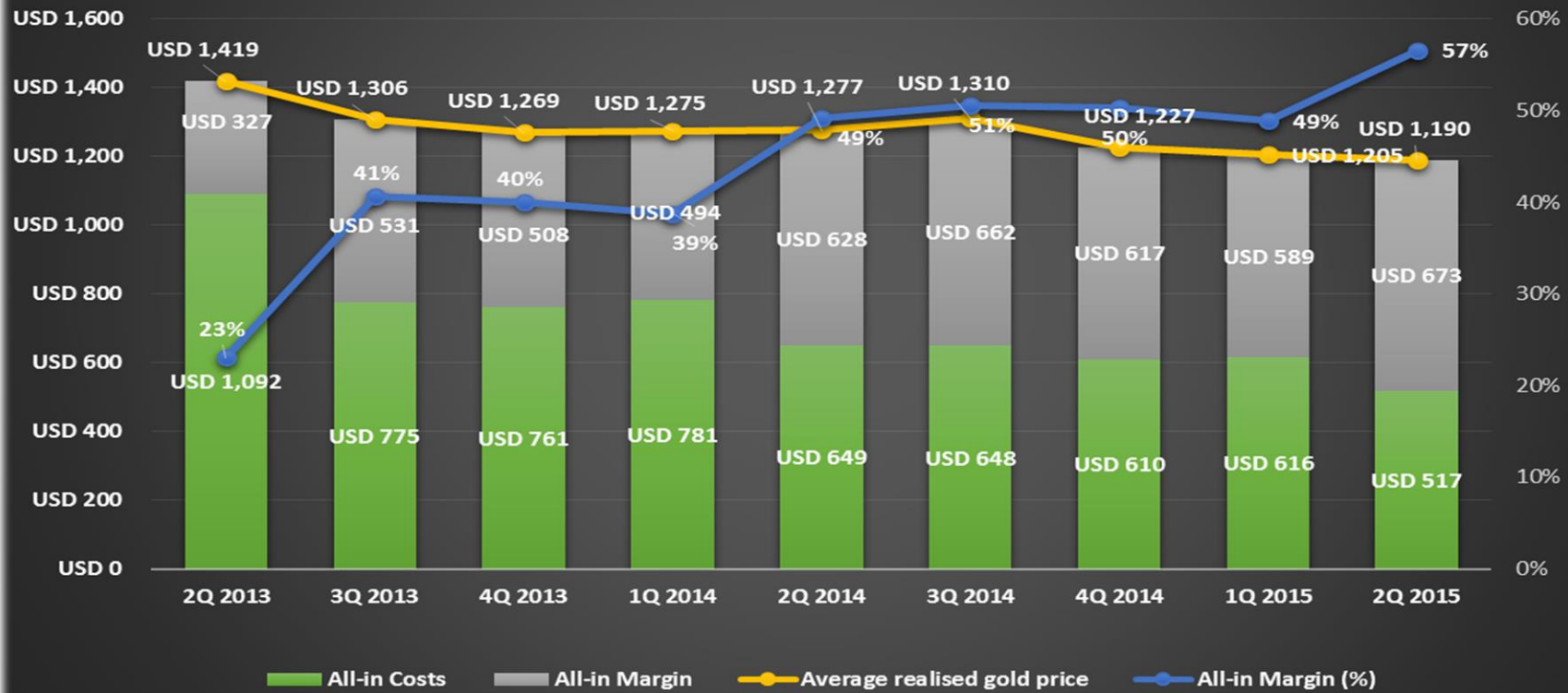
- Net profit ↑16.9% excluding one-off tax reversal of US\$1.71 million tax credit in 2Q2014;
- Net profit margin (excluding one-off tax reversal) ↑1% despite the drop in average realised gold price.

Analysis Of All-In Costs And Margin

	2Q 2015	2Q 2014	Changes
	US\$ / gold ounce sold		%
Mining related costs	291	373	-22%
Royalty and tribute expenses	88	98	-10%
Adjusted operating costs	379	471	-20%
General and administrative costs	55	54	2%
Capital expenditure	28	60	-53%
All-in sustaining costs	462	585	-21%
Capital exploration (non-sustaining)	6	26	-77%
Capital expenditure (non-sustaining)	49	38	29%
All-in costs (A)	517	649	-20%
Average realized gold price (B)	1,190	1,277	-7%
All-in Margin (C= B - A)	673	628	7%
All-in Margin (%) (C / B)	57%	49%	8%

Summary Of All-In Costs And Margin

All-in Margin in US\$/ cost gold ounce sold



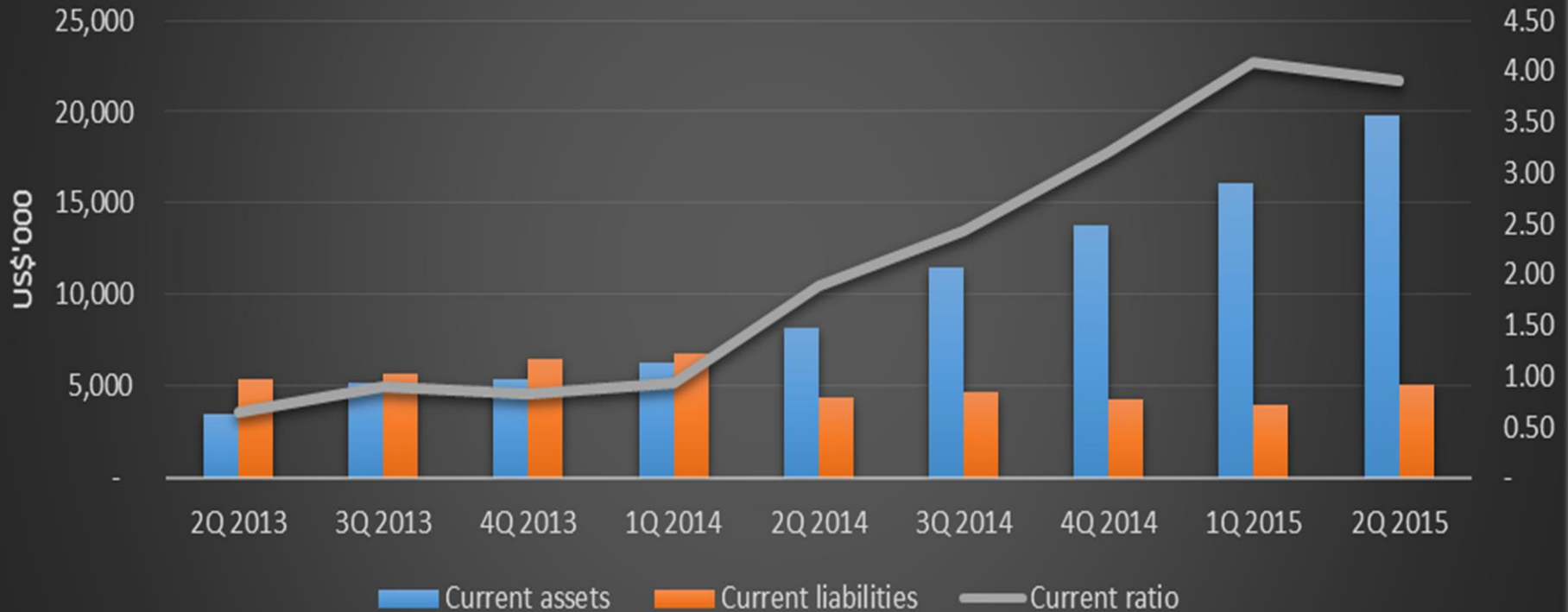
- All-in sustaining costs include adjusted operating costs and sustaining capital expenditure, corporate general and administrative expenses, exploration expense, reflecting the full cost of gold production from current operations.
- Reduced all-in costs by a further 15.2% since the start of the year to US\$517 in 2Q2015, as it leveraged on three leaching yards and a new crushing system.

Balance Sheet Highlights

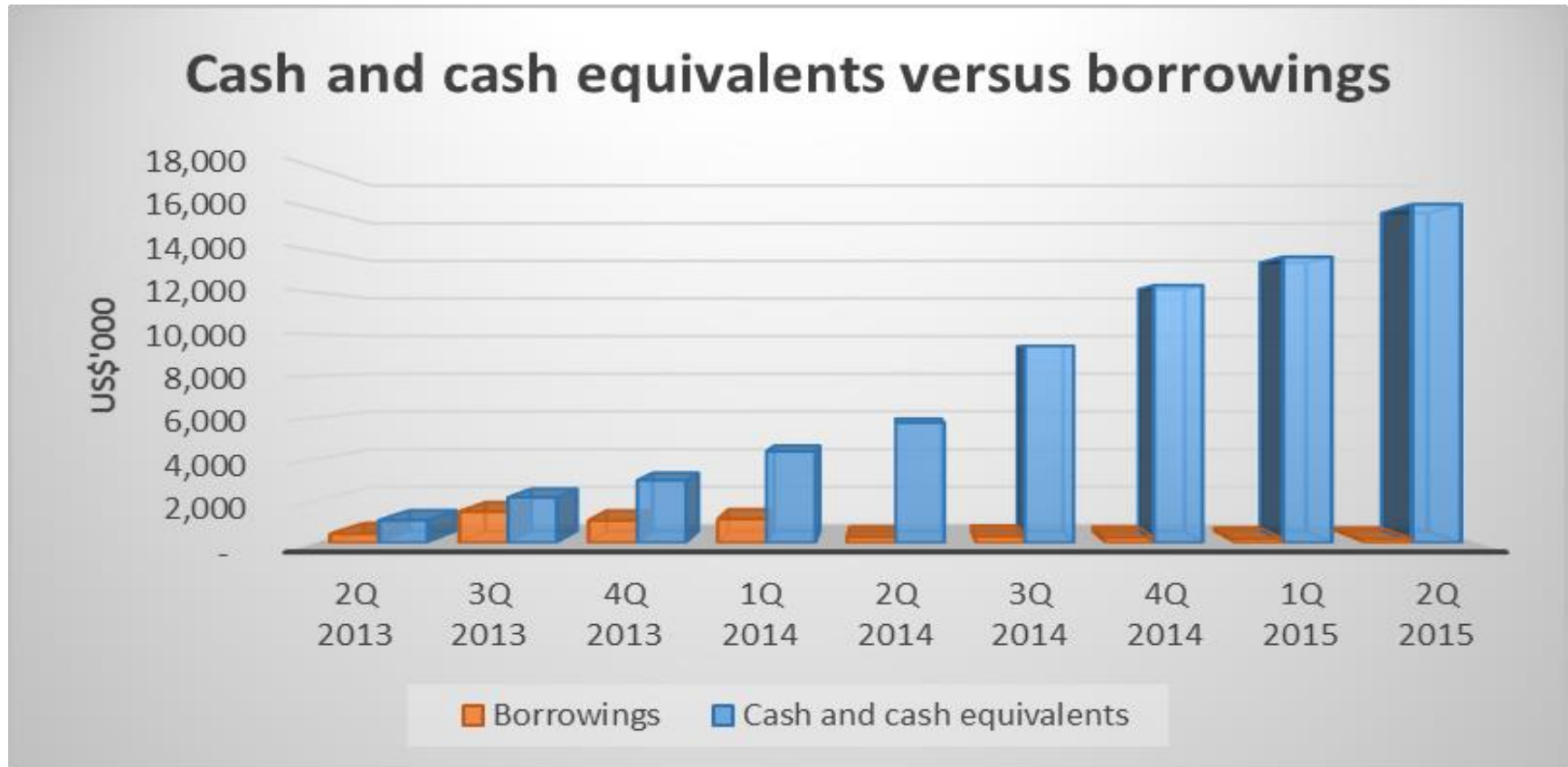
US\$ (million)	As at 30 June 2015	As at 31 December 2014	Change (%)
Total Assets	39.3	32.8	19.8
Total Liabilities	5.9	5.0	18.0
Cash & Cash Equivalents	16.2	12.3	31.7
Shareholders' Equity	29.6	25.2	17.5
NAV Per Share (US cents)	7.25	6.17	17.5

Balance Sheet Highlights

Current assets versus current liabilities, Current ratio



Cash Position



- In 2Q2015, the Group generated net cash from operations of US\$4.35 million, compared to US\$3.66 million in 2Q2014.
- Cash and cash equivalents as at 30 June 2015 stood at US\$16.22 million, rose sharply from US\$5.75 million as at 30 June 2014.

2015 OUTLOOK

2015 Outlook

- **Continue Gold Production Expansion Programs:**
 - Increase leaching capacity and enhance gold recovery process with the aim of increasing gold production
- **Cost Optimization:**
 - Further streamline production process to reduce wastage of raw material thereby reducing gold production cost to enhance profitability
 - Leverage economies of scale from increased production capacity to lower material costs from key suppliers
- **Accelerate Exploration Activities:**
 - To increase gold resources and reserves in Sokor Gold Project
 - To increase silver, lead and zinc resources and reserves in Sokor Gold Project
- **Portfolio Expansion:**
 - To explore opportunities in the acquisition and development of other mining projects in Malaysia and highly prospective exploration and mining projects located in SE Asia and Australasia

JORC COMPLIANT GOLD RESOURCE

JORC Compliant Gold Resource

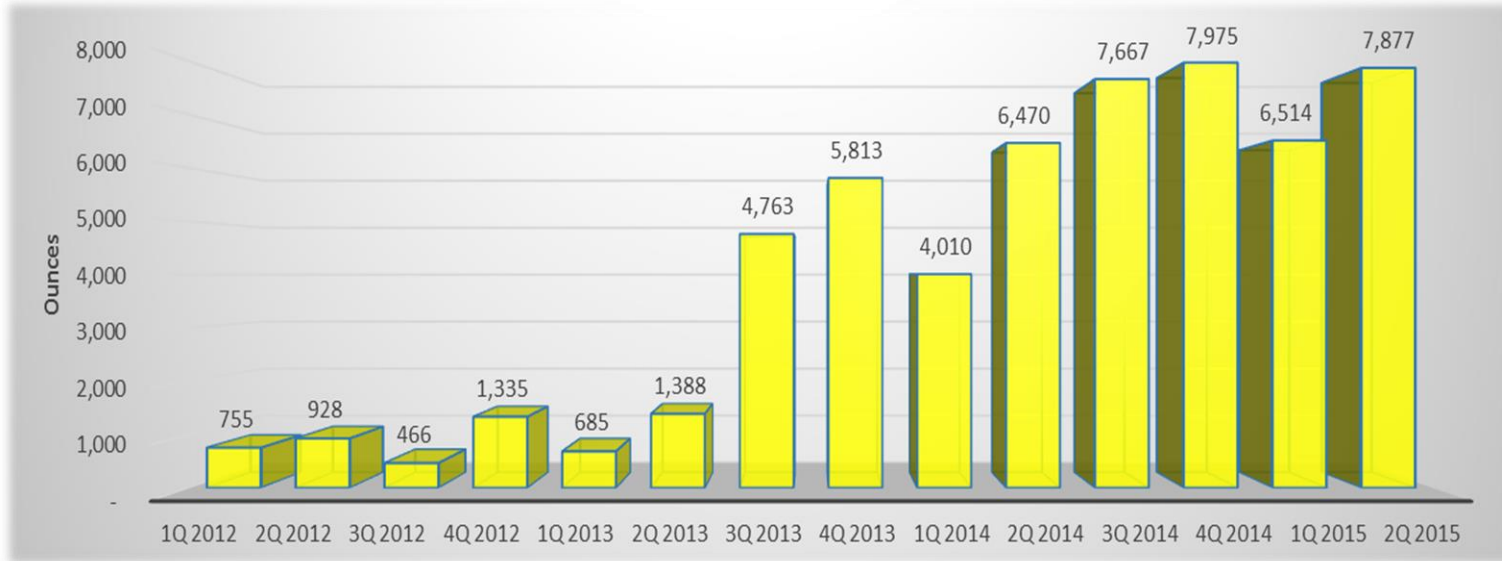
Category	Mineral type	Gross attributable to licence			Gross attributable to CNMC			
		Tonnes (millions)	Grade (Au g/t, Ag g/t, Pb%, Zn%)	Contained metal (Au koz, Ag koz, Pb t, Zn t)	Tonnes (millions)	Grade (Au g/t, Ag g/t, Pb%, Zn%)	Contained metal (Au koz, Ag koz, Pb t, Zn t)	Change from previous update (%)
Measured	Gold	0.55	3.2	57	0.45	3.2	46	+1
Indicated	Gold	6.75	1.3	287	5.47	1.3	232	+34
Inferred	Gold	3.51	1.4	163	2.84	1.4	132	-17
Total	Gold	10.81	1.5	506	8.76	1.5	410	+8
Measured	Silver	0.33	62	659	0.27	62	534	-3
Indicated	Silver	0.16	72	360	0.13	72	291	+52
Inferred	Silver	0.45	33	473	0.37	33	383	+49
Total	Silver	0.94	50	1,492	0.76	53	1,208	+21
Measured	Lead	0.33	1.7	5,569	0.27	1.7	4,511	0
Indicated	Lead	0.16	1.7	2,628	0.13	1.7	2,129	+66
Inferred	Lead	0.45	0.9	4,252	0.37	0.9	3,444	+67
Total	Lead	0.94	1.3	12,449	0.76	1.3	10,084	+28
Measured	Zinc	0.33	1.7	5,487	0.27	1.7	4,444	-2
Indicated	Zinc	0.16	2.0	3,062	0.13	2.0	2,480	+112
Inferred	Zinc	0.45	1.0	4,459	0.37	1.0	3,612	+58
Total	Zinc	0.94	1.4	13,007	0.76	1.4	10,536	+32

As at 31 December 2014, Total Measured, Indicated and Inferred gold Mineral Resources for the Sokor Gold Project (above a 0.3 g/t gold cut-off grade at *Rixen* and a 0.5 g/t gold cut-off grade at *Manson's Lode, New Discovery and Ketubong*) is 10.81 million tonne at 1.5g/t gold with contained gold of 506,000 ounces (2013: 9.14 million tonne at 1.6 g/t gold with contained gold of 465,000 ounces).

GOLDMINE PRODUCTION

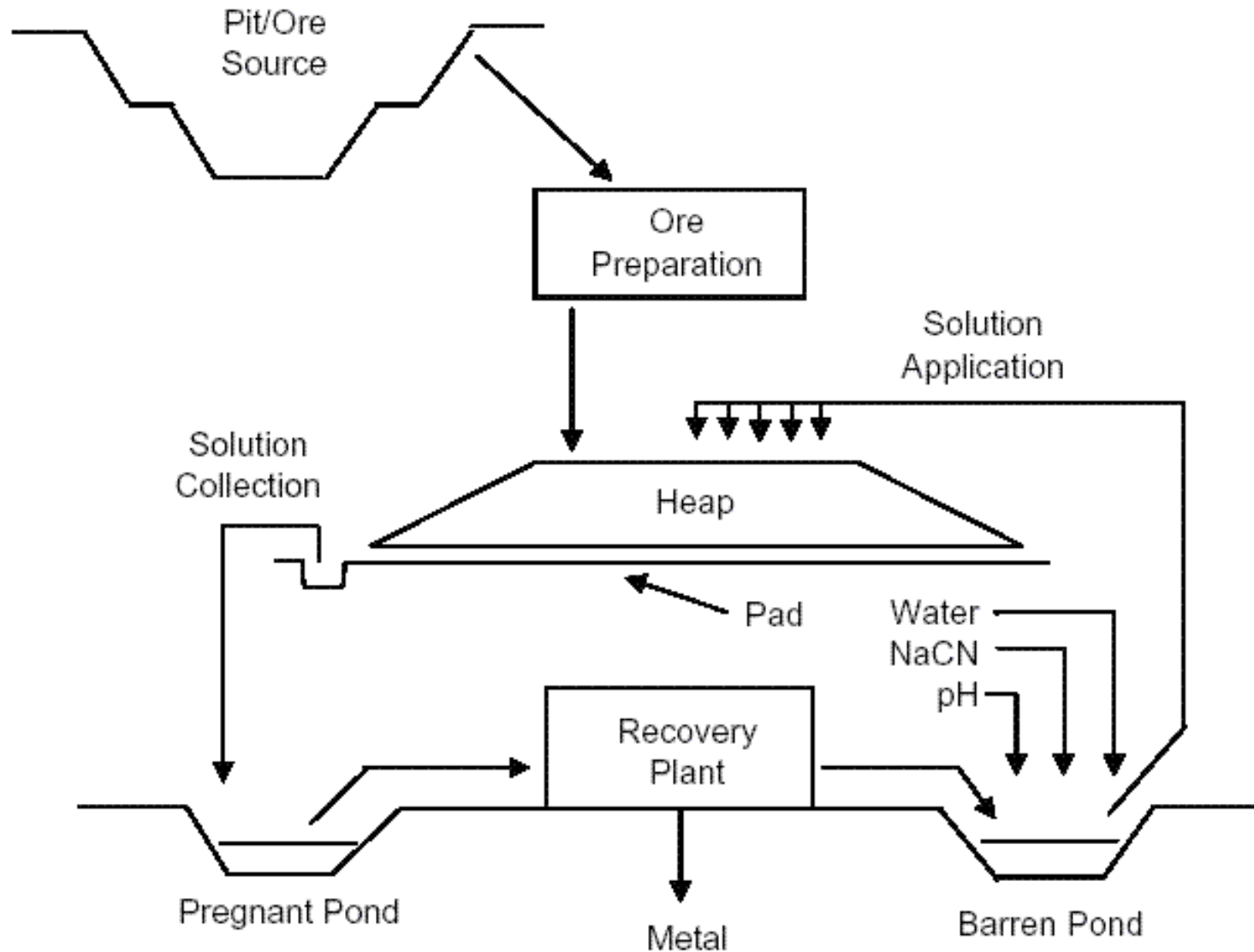
Goldmine Production

Fine Gold Produced Quarter-on-Quarter in Ounces



- Commenced gold production and have successfully completed more than 180 gold pours since July 2010. Gold production has increased annually since FY2010.
- Three leaching yards with estimated leaching capacity of 1 million tonnes of ore per annum.
- Brand new gold de-absorption plant comprising of full set gold de-absorption, active carbon re-generation, and smelting system in operation.
- Over the comparative periods, fine gold production increased 21.7% to 7,876.55 ounces in 2Q2015 from 6,470.24 ounces in 2Q2014.

Heap Leach Flow Chart



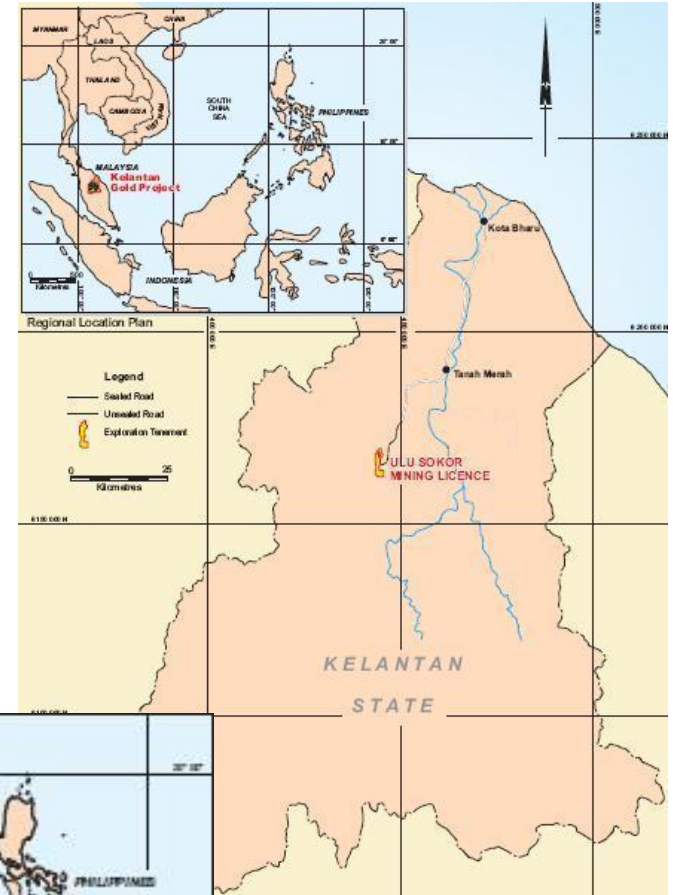
2015 MILESTONES

2015 Milestones

Date:	Milestone:
6th January	CMNC produced a total of 4,681.15 Ounces of Gold Doré Bars in Dec14, despite the North-East monsoon season.
16th February	FY14 results announced – quadrupling net profit, amounting to US\$15.32 million, due to strong gold production
2nd April	Newly discovered Mineral Resources and Ore Reserves for the Sokor Gold Project amounting to: 10.81 million tonne at 1.5g/t gold with contained gold of 506,000 ounces
8th April	Successfully conducted fine ore agglomeration test-work and submitted applications to relevant governmental departments to restart the existing vat leach operations

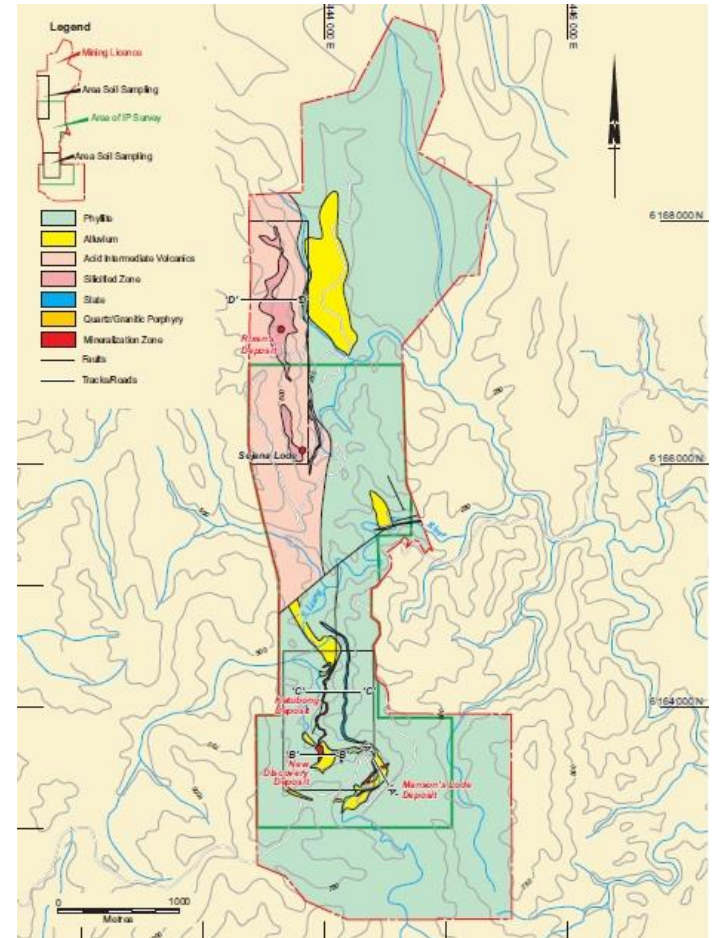
About Us

- Founded by Prof. Lin Xiang Xiong – the Chief Advisor for China International Trade to the Kelantan state government, CNMC commenced operations in 2006.
- We are a mineral exploration and mining company, focusing on the production and sale of gold; Also the first gold mining company to be listed on the Catalist Board of SGX
- Our principal mining activity is in Kelantan, Malaysia.



Sokor Gold Zone

- CNMC owns Gold mining for an area of 10km² (“Sokor Block”)
- The mining licences were obtained with full support from Kelantan State Government
- 4 identified areas:
 - Manson’s Lode
 - New Discovery
 - Sg. Ketubong
 - Rixen



Stock Data & Dividend

(SGX: 5TP) (Reuters: CNMC.SI) (Bloomberg: CNMC:SP)	6 August 2015
Price per share	S\$0.205
Market capitalisation	S\$83.50 Million
Share issued	407.29 Million
P/E ratio ^(Note)	5.13
Dividend Yield (YTD)	0.77%

Note: Market price per share @ 6 August 2015 / Earning per share (S\$) as of 30 June 2015.

For 1H2015, CNMC will pay an interim tax-exempt dividend of 0.18 Singapore cent per share, up from 0.15 Singapore cent per share in 1H2014.



THANK YOU

Media and Investor Contact Information:

WeR1 Consultants Pte Ltd

38A Circular Road, Singapore 049394

Tel: (65) 67374844 | Fax: (65) 67374944

Frankie Ho, frankieho@wer1.net

Sheryl Sim, sheryl@wer1.net